



# TRIMFORM

## Single Skin Cladding Agricultural Range

Trimform's Single Skin Cladding range provides reliable, economical solutions for **roofing** and **walling** in agricultural environments.

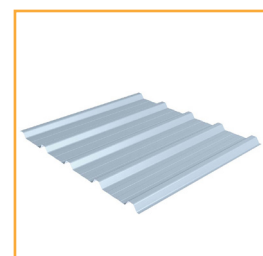
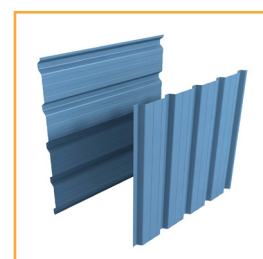
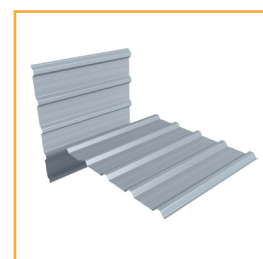
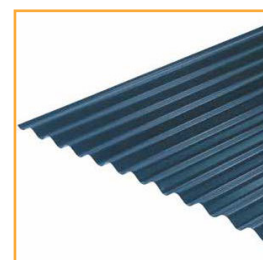
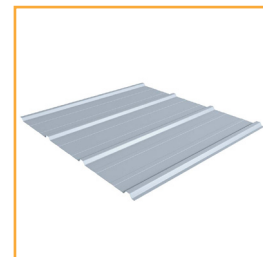
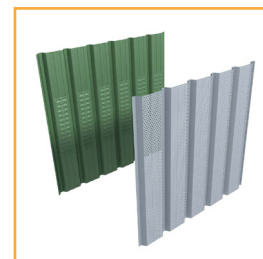
Manufactured in the UK from high-quality, pre-coated galvanised steel, this system is designed to withstand harsh rural conditions, while delivering fast installation and long-lasting protection.

### KEY FEATURES

- Supplied in 0.5 mm & 0.7 mm pre-coated galvanised steel
- Profiles cut to length for reduced site waste
- Trapezoidal, corrugated, liner, & vented wall options
- Wide selection of colours and finishes to meet planning or aesthetic needs
- Suitable for timber, steel, or concrete structures
- Full system support: rooflights, flashings, gutters, fixings, & sealants
- Compatible with Trimform supplied secondary steelwork systems (purlins, rails, eaves beams)

## PROFILE RANGE

Profile	Type	Application	Gauge
TF324P / TF325P	Trapezoidal	Roof / wall / liner variants	0.5mm / 0.7mm
TF324L / TF325L	Trapezoidal	Roof / wall / internal liner use	0.5mm / 0.7mm
TF17-1000WL	Shallow Rib Liner	Internal wall lining	0.4mm
AS24-1000W Ventair	Louvered Wall Panel	Natural ventilation in walls	Standard
AS13/3	Corrugated	Roof & wall cladding	0.5mm / 0.7mm



### TYPICAL APPLICATIONS

- Livestock housing
- Grain & feed stores
- Machinery sheds & workshops
- General-purpose & multipurpose agricultural buildings
- Refurbishment & profile matching for legacy systems

### FINISHES & COLOURS

A wide variety of durable finishes are available, including polyester and plastisol coatings

Standard and custom RAL colours can be supplied to meet local planning or design needs

### OTHER PROFILES AVAILABLE ON REQUEST

### TECHNICAL SUPPORT

Trimform offers full design and support services:

- CAD drawings & load/span data
- Profile-matching for existing buildings
- Fixing advice & component selection
- Integration with in-house manufactured purlins, rails, & eaves systems

WANT TO KNOW MORE? SPEAK TO A MEMBER OF OUR TEAM TODAY

01480 461 103 | [info@trimformfabs.co.uk](mailto:info@trimformfabs.co.uk)



[www.trimformfabs.co.uk](http://www.trimformfabs.co.uk)

Harding Way, Somersham Road, St Ives, Cambridgeshire, PE27 3WR